



MONTHLY MEMBERSHIP PROGRESS REPORT

District 29 I

Results as of: 6/30/2017

GMT: OPEN

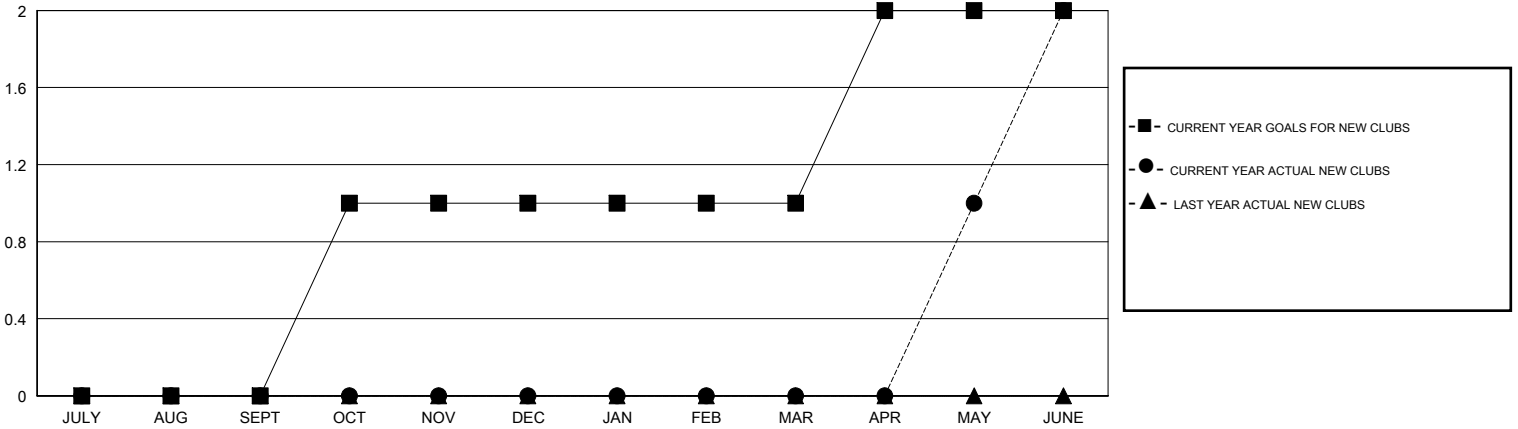
LOCATION WEST VIRGINIA

GMT CA

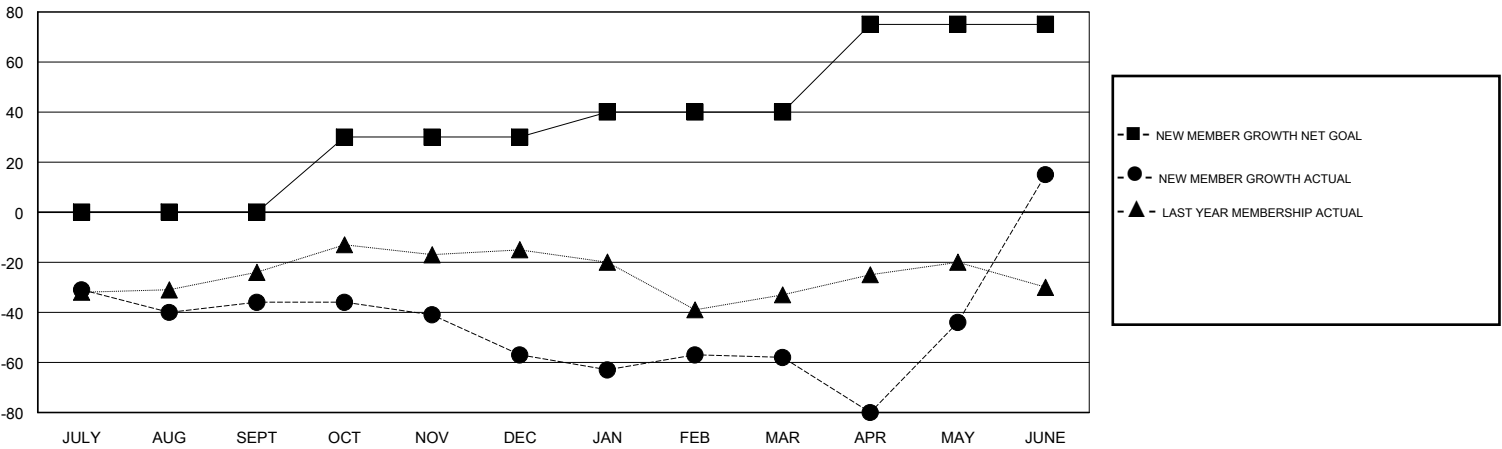
Clubs			
RESULTS FOR 2016-2017			
QUARTER	NEW CLUB GOAL	NEW CLUBS	DROPPED CLUBS
JULY/AUG/SEPT	0	0	0
OCT/NOV/DEC	1	0	1
JAN/FEB/MAR	0	0	1
APR/MAY/JUNE	1	2	1

Members			
RESULTS FOR 2016-2017			
QUARTER	NEW MEMBER GROWTH NET GOAL (not reinstated or transfers)	NEW MEMBER GROWTH ACTUAL (not reinstated or transfers)	DROPPED MEMBERS ACTUAL (including transfers)
JULY/AUG/SEPT	0	33	69
OCT/NOV/DEC	30	18	39
JAN/FEB/MAR	10	31	32
APR/MAY/JUNE	35	121	48

GOALS AND ACTUAL NEW CLUBS CUMULATIVE



GOALS AND ACTUAL MEMBERS CUMULATIVE



DROPPED CLUBS: 3	42 CLUBS OF 58 ADDED 1 OR MORE NEW MEMBERS	GENDER DISTRIBUTION
		MALE 1,066 (65.24%)
		FEMALE 568 (34.76%)
DROPPED MEMBERS	CLICK HERE FOR CUMULATIVE MEMBERSHIP DATA	TOTAL FAMILY UNIT MEMBERS 481
DECEASED 30		FAMILY MEMBERS PAYING HALF DUES 245
CLUB CANCELLED 0		
OTHER 158		
TOTAL 188		